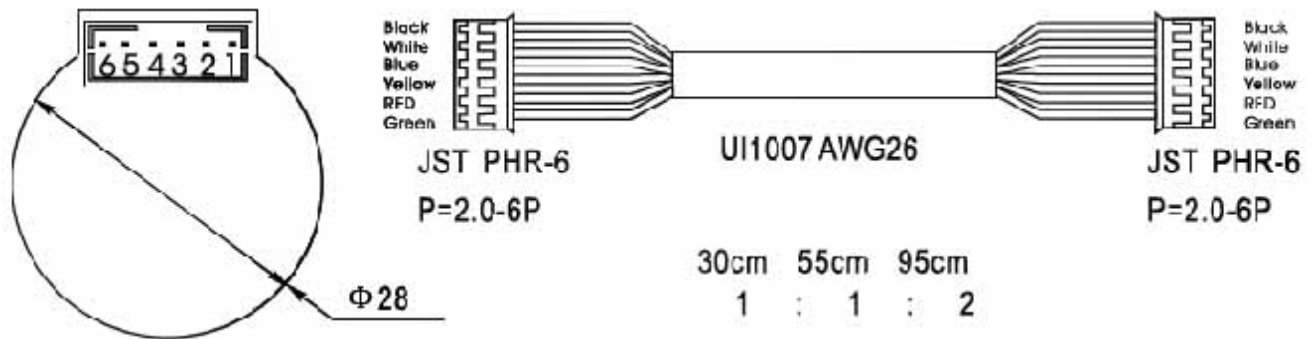


# IMN28-12 Incremental Magnet Encoder

## Features:

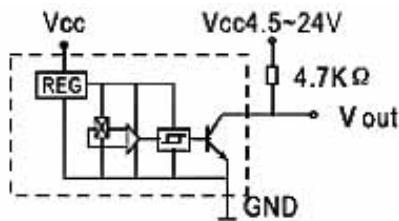
- 2 Channel quadrature or one channel output
- Low cost
- Small size OD: 28mm with 15mm high
- Resolution: 12 CPR
- Operating relative humidity: 20% ~ 85% RH
- Operating temperature range: -10°C ~ +60°C



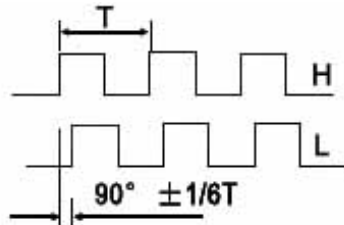
## ELECTRICAL CHARACTERISTICS

CHARACTERISTICS	SYMBOL	TEST CONDITIONS	MIN	REF	MAX	UNITS
Supply Voltage	Vcc	---	4.5	---	24	V
Output Saturation Voltage	Vce(sat)	Vcc=4.5V; RL=480Ω	----	200	400	mV
Output leakage current	Icex	Vce=12V; Vcc=12V	----	<0.1	10	V
Supply Current	Ice	Vcc=24V Output open	----	4	9	MV
Output Rise Time	Tr	Vcc=12V; RI=820Ω; CI=20pF	----	1.0	2.0	μS
Output Fall Time	Tf	Vcc=12V; RI=820Ω; CI=20pF	----	1.0	2.0	μS

### Output Circuit



### Output Wave



### Two Channel Encoder Connections

1. - Motor
2. + Motor
3. HALL SENSOR Vcc
4. HALL SENSOR Gnd
5. HALL SENSOR A Vout
6. HALL SENSOR B Vout

### One Channel Encoder Connections

1. Black : - Motor
2. Red : + Motor
3. Brown : HALL SENSOR Vcc
4. Green : HALL SENSOR Gnd
5. Blue : HALL SENSOR A Vout
6. Purple : HALL SENSOR B Vout