

## 1.8° Size 08 (20mm) Hybrid Motors

- General Specification for Hybrid Step Motors

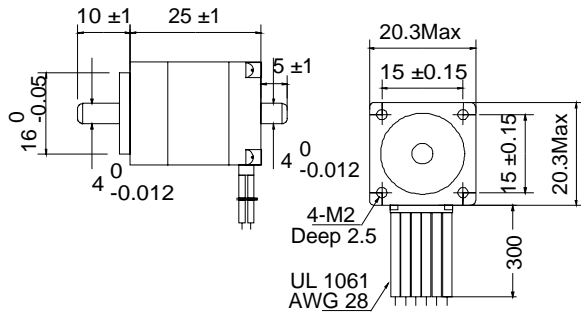
Item	Specifications
Step Angle Accuracy	± 5% (full step, no load)
Resistance Accuracy	± 10%
Inductance Accuracy	± 20%
Temperature Rise	80°C Max. (rated current, 2 phase on)
Ambient Temperature	- 10°C ~ +50°C
Insulation Resistance	100 MΩ Min., 500 VDC
Dielectric Strength	500 VAC for one minute
Shaft Radial Play	0.06 Max. (450 g-load)
Shaft Axial Play	0.08 Max. (450 g-load)



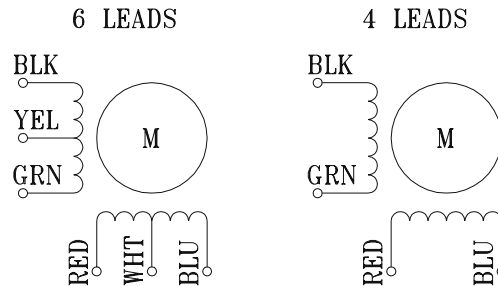
- 1.8° Size 8 Stepping Motor Specifications

Model No.		Rated Voltage	Per Phase			Holding Torque		# of Leads	Rotor Inertia	Weight
			Current	Resistance	Inductance	Oz-in	Kg-cm			
Single Shaft	Double Shaft	V	A	Ω	MH			g-cm <sup>2</sup>	Kg	
08H110-020-4A	08H110-020-4B	12	0.2	24	8.02	2.5	0.18	4	2.8	0.05
08H120-060-4A	08H120-060-4B	3.9	0.6	6.5	1.7	2.5	0.18	4	3.0	0.06
08H130-060-4A	08H130-060-4B	3.9	0.6	6.5	1.7	2.8	0.2	4	3.3	0.07

- Motor Dimensions



- Wiring Diagram



Model #	A	
	Inches	mm
08H110-xx	1.1	28
08H120-xx	1.2	30.5
08H130-xx	1.3	34

- Motor modification options

Motor : Special length, Windings Bearings, & Threads

Shaft : Flat, Pinion, Keyway, Length

Lead wire : Type, Color, Length, Connector Installation