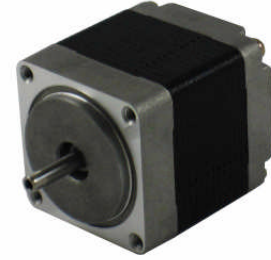


## 1.8° Size 11 High Torque Hybrid Motors

- General Specification for Hybrid Step Motors

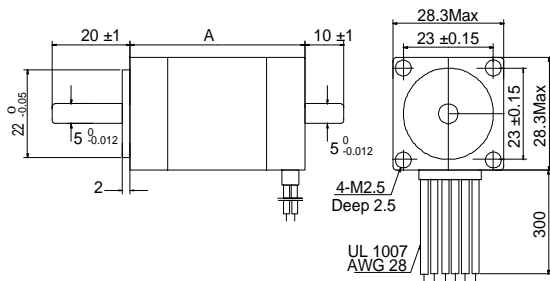
Item	Specifications
Step Angle Accuracy	± 5% (full step, no load)
Resistance Accuracy	± 10%
Inductance Accuracy	± 20%
Temperature Rise	80°C Max. (rated current, 2 phase on)
Ambient Temperature	- 10°C ~ +50°C
Insulation Resistance	100 MΩ Min., 500 VDC
Dielectric Strength	500 VAC for one minute
Shaft Radial Play	0.06 Max. (450 g-load)
Shaft Axial Play	0.08 Max. (450 g-load)



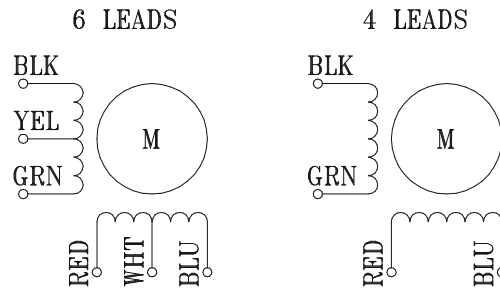
- Size 11 High Torque Stepping Motor Specifications

Model No.		Rated Voltage	Per Phase			Holding Torque		# of Leads	Rotor Inertia	Weight
			Current	Resistance	Inductance	Oz-in	Kg-cm			
Single Shaft	Double Shaft	V	A	Ω	MH			g-cm <sup>2</sup>	Kg	
11H130-095-6A	11H130-095-6B	2.66	0.95	2.8	1	6.0	0.43	6	9	0.11
11H130-067-4A	11H130-067-4B	3.8	0.67	5.6	4.2	8.3	0.6	4		
11H160-095-6A	11H160-095-6B	3.4	0.95	3.4	1.2	10.4	0.75	6	12	0.14
11H160-067-4A	11H160-067-4B	6.8	0.67	6.8	4.9	13.2	0.95	4		
11H200-095-6A	11H200-095-6B	4.4	0.95	4.6	1.4	12.5	0.9	6	18	0.2
11H200-067-4A	11H200-067-4B	6.2	0.67	9.2	5.7	16.7	1.2	4		

- Dimensions:



- Wiring Diagram:



Model #	A	
	Inches	Mm
11H130H-xx	1.26	32
11H160H-xx	1.56	42
11H200H-xx	2.03	51

- Motor Options:

Motor : Special length, Windings Bearings, & Threads

Shaft : Flat, Pinion, Keyway, Length

Lead Wire : Type, Color, Length, Connector Installation