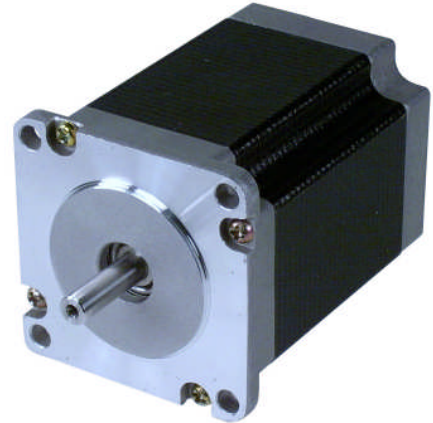


## 1.8° Size 24 High Torque Hybrid Motors

- General Specification for Hybrid Step Motors

Item	Specifications
Step Angle Accuracy	± 5% (full step, no load)
Resistance Accuracy	± 10%
Inductance Accuracy	± 20%
Temperature Rise	80°C Max. (rated current, 2 phase on)
Ambient Temperature	- 10°C ~ +50°C
Insulation Resistance	100 MΩ Min., 500 VDC
Dielectric Strength	500 VAC for one minute
Shaft Radial Play	0.06 Max. (450 g-load)
Shaft Axial Play	0.08 Max. (450 g-load)

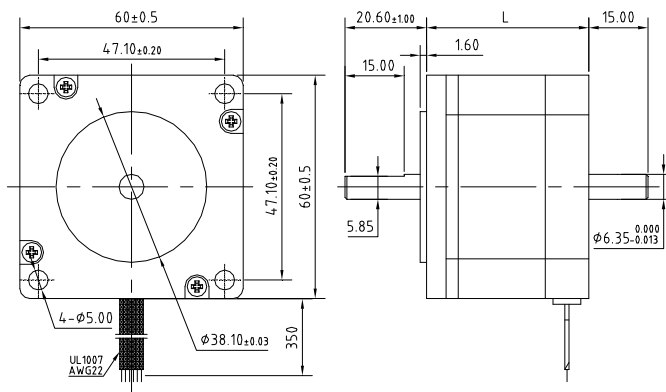


- Size 24 High Torque Stepping Motor Specifications

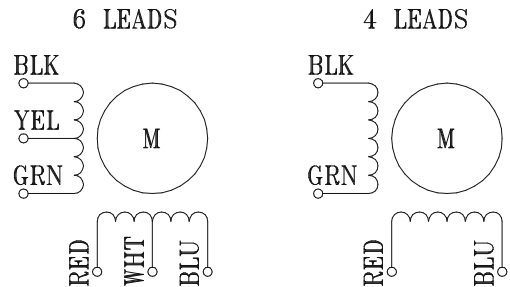
Model No.	# of Lead	Connection			PER PHASE			Holding Torque		Motor Length Mm/inch	Rotor Inertia g-cm <sup>2</sup>	Weight Kg
					Current	Resistance	Inductance	Oz-in	N.m			
		Uni-P.	Bi-Polar	A	Ω	MH						
24H177H-140-#A/B	6/4	*		2.0		2.0	107	0.755	45/1.77		1.3	
			S	1.4		8.0	150	1.057				
			P	2.8		2.0	150	1.057				
24H220H-140-#A/B	6/4	*		2.0		3.6	164	1.160	56/2.20		1.7	
			S	1.4		14.4	230	1.624				
			P	2.8		3.6	230	1.624				
24H256H-140-#A/B	6/4	*		2.0		4.6	214	1.512	65/2.56		2.2	
			S	1.4		18.4	300	2.117				
			P	2.8		4.6	300	2.117				
24H303H-140-#A/B	6/4	*		2.0		8.2	271	1.915	77/3.03		2.6	
			S	1.4		32.8	380	2.681				
			P	2.8		8.2	380	2.681				
24H338H-140-#A/B	6/4	*		3.0		3.2	308	2.177	86/3.38		3.1	
			S	2.1		12.8	432	3.0478				
			P	4.2		3.2	432	3.0478				

Notes: Uni-P. = Uni-Polar; S = Series; P = Parallel

- Dimensions:



### Wiring Diagram



- Motor modification options

Motor : Special length, Windings Bearings, & Threads  
 Shaft : Flat, Pinion, Keyway, Size, Length  
 Lead wire: Type, Color, Length, Connector Installation