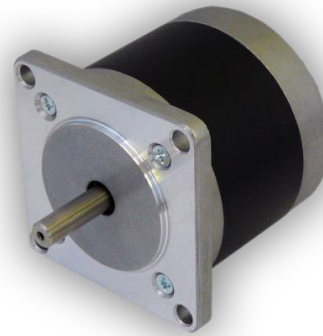


57BLY-Brushless DC Motor:

• General Specifications

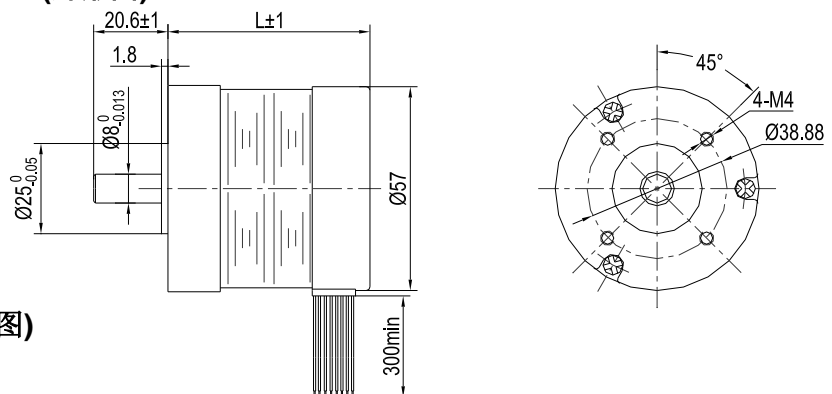
Winding connection	STAR
Sensor position	120°
Insulation Class	B
Ambient temperature	-20°C~+50°C
Insulation resistance	100MΩ Min.500V DC
Dielectric strength	500V AC 1minute



• Electrical Specifications

Model	SEI	57BLY42	57BLY47	57BLY57	57BLY67	57BLY87	57BLY107
	Factory	-2425	-2430	-2430	-2430	-2430	-2430
		57BL01	57BL02	57BL03	57BL04	57BL05	57BL06
Nominal voltage	Vdc	24	24	24	24	24	24
Rated speed	RPM	2500	3000	3000	3000	3000	3000
Rated Torque	N.m	0.057	0.11	0.165	0.22	0.33	0.44
Rated Current	Amps	1.2	2.3	3	4.4	6.6	8.6
Output Power	Watts	15	34	52	69	103	138
Peak Torque	N.m	0.18	0.38	0.58	0.8	1.2	1.6
Peak Current	Amps	3.6	6.8	9	13.2	19.8	25.8
Torque constant	N.m/A	0.074	0.059	0.06	0.062	0.062	0.063
Back EMF	V/krpm	7.75	6.2	6.3	6.5	6.5	6.6
Rotor inertia	g·cm ²	32	42	58	72	106	140
Body Length (L)	mm	41.5	46.5	56.5	66.5	86.5	106.5
Mass	Kg	0.43	0.5	0.67	0.75	1	1.25
Number of Poles & Phases	4 poles / 3 phases						

• Mechanical Dimensions(外形图):



• Wiring Diagram(接线图)

