

88x160 88JR160-600K SPUR GEARHEAD (正齿轮箱)

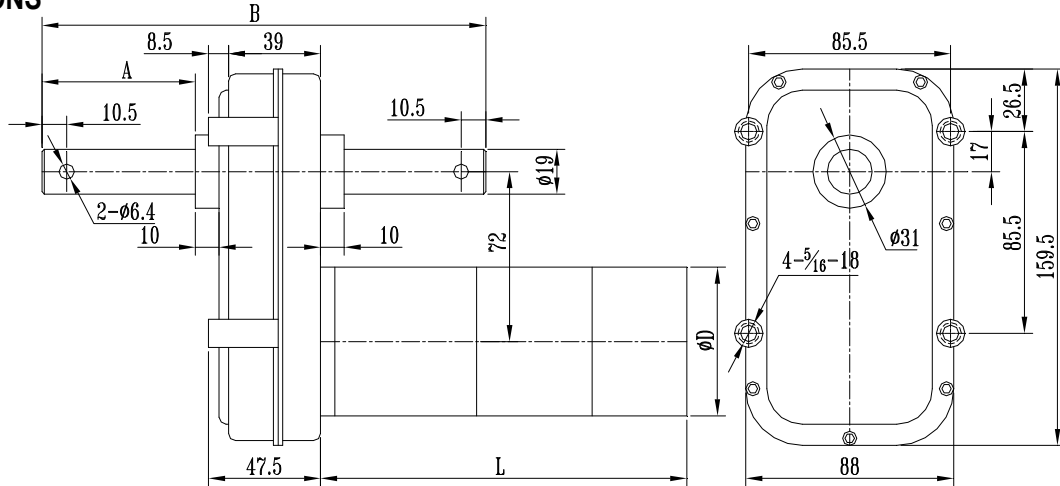
w/63ZYT PM DC MOTOR (永磁直流马达)



● GEARHEAD SPECIFICATIONS

Gear Ratio	Stage	Eff.	Rated Load	Max. Load
减速比	级数	效率	额定负载	最大负载
1:X	#	%	N.m	N.m
	3	66	40	120
299	4	59	60	180
	5	53	80	240

● DIMENSIONS



● MOTOR SPECIFICATIONS

Model	Rated	No-load		Rated				Efficiency	Motor Length	
	Voltage	Current	Speed	Current	Speed	Torque				Power
	Vdc	Amp	RPM	Amp	RPM	oz-in	mNm			W
63ZYT083-12-32	12	0.8	3200	4.5	2752	16.4	116	33	62.0	83
63ZYT100-12-65	12	2.8	6500	12.6	5729	20.0	141	85	56.0	100
63ZYT154-12-36	12	2.5	3600	12	3290	33	233	80	55.8	154
63ZYT083-24-38	24	0.9	3800	4.9	3200	31.0	219	73	62.4	83
63ZYT100-24-19	24	0.4	1900	3.5	1600	38.2	270	45	53.9	100
63ZYT154-24-36	24	1.2	3600	6	3290	33	233	80	55.8	154

● GEAR MOTOR SPECIFICATIONS: 88JR160-60NxxxG/ Motor model Y(IN-LB) = 8.85075*X(Nm)

Volt.	Speed	Gear Ratio								
		46	75	100	200	299	430	600	800	
12 Vdc	3200	Rated speed (RPM)	60	37	28	14	9	6	5	3
		Rated load (N.m)	3.90	6.36	7.66	15.32	22.91	32.94	41.09	54.79
	3800	Rated speed (RPM)	70	43	32	16	11	7	5	4
		Rated load (N.m)	7.4	12.0	14.5	28.9	43.2	62.1	77.5	80
	6500	Rated speed (RPM)	125	76	57	29	19	13	10	7
		Rated load (N.m)	4.7	7.7	9.3	18.6	27.9	40.1	50.0	66.7
24 Vdc	1900	Rated speed (RPM)	35	21	16	8	5	4	3	2
		Rated load (N.m)	9.07	14.78	17.82	35.64	53.28	76.63	80	80
	3600	Rated speed (RPM)	72	44	33	16	11	8	5	4
		Rated load (N.m)	7.8	12.8	15.4	30.8	46.0	66.1	80	80
	3600	Rated speed (RPM)	72	44	33	16	11	8	5	4
		Rated load (N.m)	7.8	12.8	15.4	30.8	46.0	66.1	80	80