

0.9° Size 14 Hybrid Motors

- General Specification for Hybrid Step Motors

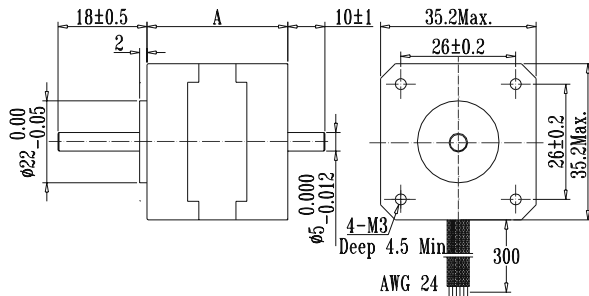
Item	Specifications
Step Angle Accuracy	± 5% (full step, no load)
Resistance Accuracy	± 10%
Inductance Accuracy	± 20%
Temperature Rise	80°C Max. (rated current, 2 phase on)
Ambient Temperature	- 10°C ~ +50°C
Insulation Resistance	100 MΩ Min., 500 VDC
Dielectric Strength	500 VAC for one minute
Shaft Radial Play	0.06 Max. (450 g-load)
Shaft Axial Play	0.08 Max. (450 g-load)



- 0.9° Size 14 Stepping Motor Specifications

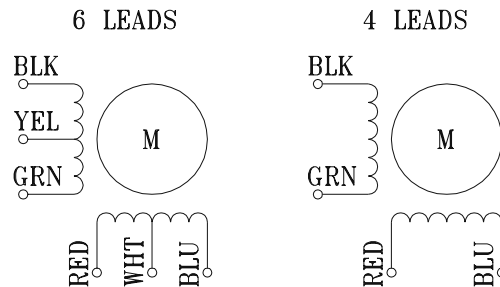
Model No.		Rated Voltage	Per Phase			Holding Torque		# of Leads	Rotor Inertia	Weight
			Current	Resistance	Inductance	Oz-in	Kg-cm			
Single Shaft	Double Shaft	V	A	Ω	MH	Oz-in	Kg-cm	g-cm ²	Kg	
14H085M-025-4A	14H085M-025-4B	6.25	0.25	25	7.2	4.16	0.3	4	8	0.08
14H085M-039-4A	14H085M-039-4B	3.9	0.39	10	2.8	4.16	0.3		8	0.08
14H110M-050-4A	14H110M-050-4B	5	0.5	10	2.2	12.49	0.9	4	12	0.1
14H110M-100-4A	14H110M-100-4B	2.5	1	2.5	1.8	12.49	0.9		12	0.1
14H130M-036-6A	14H130M-036-6B	12	0.36	33	12	8.33	0.6	6	14	0.17
14H130M-060-4A	14H130M-060-4B	7.2	0.6	12	16	18.04	1.3	4	14	0.17

- Motor Dimensions



Model #	A	
	Inches	mm
14H085-xx	0.85	22
14H110-xx	1.1	28
14H130-xx	1.3	34

- Wiring Diagram



- Motor modification options

Motor : Special length, Windings Bearings, & Threads

Shaft : Flat, Pinion, Keyway, Length

Lead wire : Type, Color, Length, Connector Installation