

1.8° Size 42 High Torque Hybrid Motors

- General Specification for Hybrid Step Motors

Item	Specifications
Step Angle Accuracy	± 5% (full step, no load)
Resistance Accuracy	± 10%
Inductance Accuracy	± 20%
Temperature Rise	80°C Max. (rated current, 2 phase on)
Ambient Temperature	- 10°C ~ +50°C
Insulation Resistance	100 MΩ Min., 500 VDC
Dielectric Strength	500 VAC for one minute
Shaft Radial Play	0.06 Max. (450 g-load)
Shaft Axial Play	0.08 Max. (450 g-load)

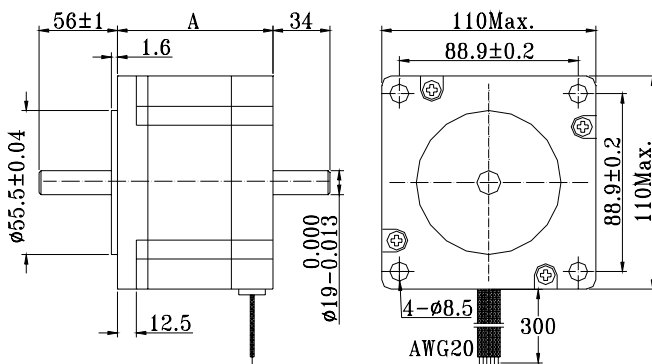


- Size 42 High Torque Stepping Motor Specifications

Model No.	# of Lead	Connection		PER PHASE			Holding Torque		Detent torque	Rotor Inertia	Weight
				Current	Resistance	Inductance	Oz-in	N.m			
		Uni-Polar	Bi-Polar	A	Ω	MH	N.m	N.m	g-cm ²	Kg	
42H390H-420-8A/B	8	*		4.2	1.76	13.2	991	7.0	0.3	5500	5
42H390H-290-8A/B			S	2.9	3.52	52.8	1388	9.8			
42H390H-590-8A/B			P	5.9	0.88	13.2	1388	9.8			
42H390H-420-8A/B	8	*		6.0	0.85	6.7	991	7.0	0.3	5500	5
42H390H-290-8A/B			S	4.2	1.7	26.8	1388	9.8			
42H390H-590-8A/B			P	8.4	0.425	6.7	1388	9.8			
42H580H-420-8A/B	8	*		4.2	2.7	26.5	1983	14.0	0.6	11000	8.4
42H580H-290-8A/B			S	2.9	5.4	106.0	2776	19.6			
42H580H-590-8A/B			P	5.9	1.35	26.5	2776	19.6			
42H580H-420-8A/B	8	*		6.0	1.3	13.4	1983	14.0	0.6	11000	8.4
42H580H-290-8A/B			S	4.2	2.6	53.6	2776	19.6			
42H580H-590-8A/B			P	8.4	0.65	13.4	2776	19.6			

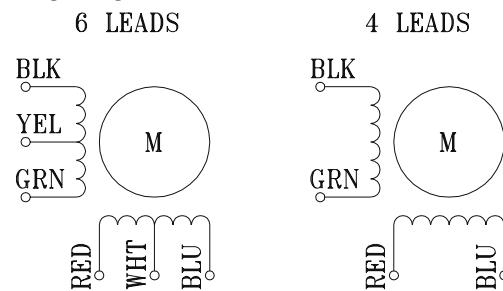
Notes: Uni-P. = Uni-Polar; S = Series; P = Parallel

- Dimensions:



Model #	A	
	Inches	mm
42H390H	3.86	98
42H580H	5.75	146

- Wiring Diagram



- Motor modification options

Motor : Special length, Windings Bearings, & Threads
 Shaft : Flat, Pinion, Keyway, Size, Length
 Lead wire: Type, Color, Length, Connector Installation