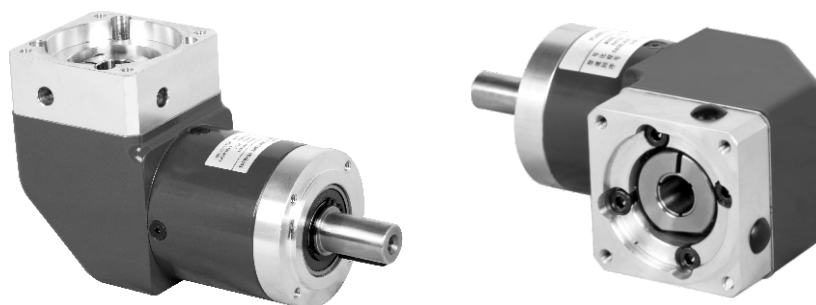


# SEPR SERIES PRECISION PLANETARY GEAR MOTOR

## Product Graph



## Technical Data

Product type		60	80	Reduction ratio	Number of stage
Rated output torque	N.M	14	40	3	1
		19	53	4	
		24	67	5	
		18	50	8	
		15	38	10	
		44	130	9	2
		44	120	12	
		44	110	15	
		44	120	16	
		44	120	20	
		40	110	25	
		44	120	32	
		40	110	40	
		18	50	64	
Life	Hour	20,000			
Instant stop torque	N.M	66	180	3	-
		86	240	4	
		80	220	5	
		80	190	8	
		70	170	10	
		88	260	9	-
		88	240	12	
		88	220	15	
		88	240	16	
		88	240	20	
		80	220	25	
		88	240	32	
		80	220	40	
		80	190	64	

Product type	60	80	Unit	Number of stage
Max radial load	700	1250	N	
Max axial load	800	1600	N	
Full load efficiency	95		%	1
	94			2
Weight	1.6	3.7	Kg	1
	1.8	4.1~4.2		2
Operating temperature	-25 ~ +90		°C	
IP	IP54			
Lubrication type	Lifetime lubrication			
Mounting type	Any			

# SEPR SERIES PRECISION PLANETARY GEAR MOTOR

## Technical Data

Product type		60	80	Reduction ratio
Moment of inertia	Kgcm <sup>2</sup>	0.221~0.357	0.910~1.273	3
				4
				5
				8
				10
		0.222~0.350	0.916~1.232	9
				12
				15
				16
				20
				25
				32
				40
				64

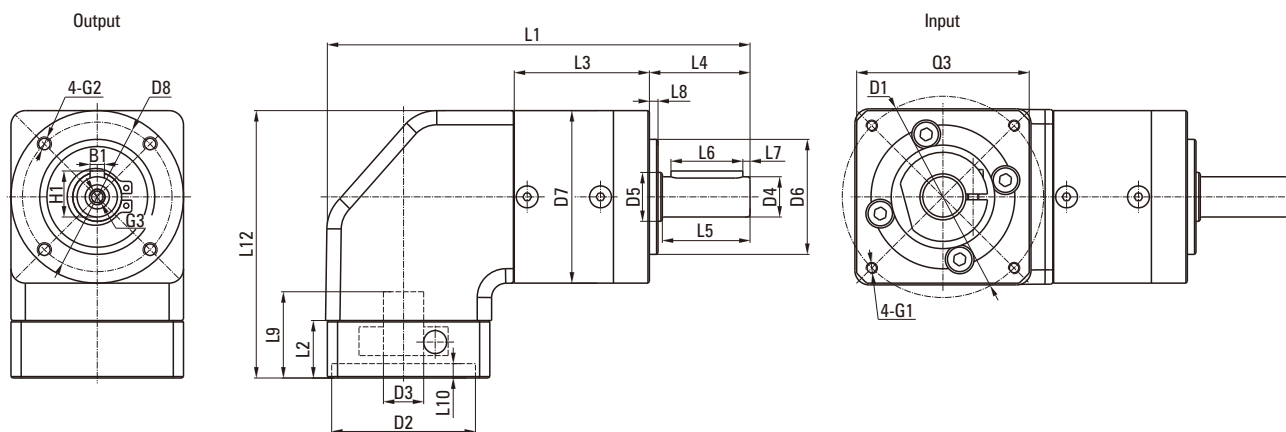
Product type		60	80	Number of stage
Backlash	arcmin	< 16	< 13	1
		< 18	< 15	2

Product type		60		80	
Number of stage		1	2	1	2
Torsional stiffness	N.M/arcmin	1.5-2.3	2.2-2.7	4.0-7.9	6.9-9.6
Noise	dB(A)	70		73	
Max input speed	min <sup>-1</sup>	13000		7000	
Recommend input speed	min <sup>-1</sup>	4500		4000	

1. The moment of inertia is related with input shaft.
2. Noise test standard, distance 1m, measured noload running with an input speed of 3000rpm.
3. The max radial and axial torque work in the location of the center of output shaft when the out speed is 100RPM.
4. The maximum input speed is designed to software.

# SEPR SERIES PRECISION PLANETARY GEAR MOTOR

## ■ Dimensions



## ■ Unit: mm

PN	60SEPR		80SEPR	
Number of stage	1	2	1	2
L1 overall length	/	/	/	/
L3 body length	47	59.5	60	78
<b>Output</b>				
L12 overall height	/		/	
L4 output shaft length	35		40	
L5 output length to the shaft shoulder	30.5		36	
L6 key length	25		28	
L7 key length to the shaft end	2.5		4	
L8 protruding length	3		3	
D4 output shaft diameter	Φ14h7		Φ20h7	
D5 shaft shoulder diameter	Φ17		Φ25	
D6 protruding diameter	Φ40h7		Φ60h7	
D7 body diameter	Φ60		Φ80	
D8 hole circle	Φ52		Φ70	
B1 key width	5		6	
H1 key height	16		22.5	
G2 mounting screw hole	M5X8		M6X10	
G3 center screw hole	M5X12		M6X16	
<b>Input</b>				
L2 input flange length	For more detailed information, please consult the manufacturer			
L9 motor shaft length				
L10 protruding depth				
D1 mounting hole distribution circle				
D2 protruding diameter				
D3 input shaft diameter				
G1 mounting threads hole x depth				
Q3 input flange				

※ Input size made according to motor size.

※ The dimensions of L9, L10, D1, D2, D3, Q3, and G1 are installation dimensions for customer's motor, and the total length of L1 depends on the size of customer's motor.