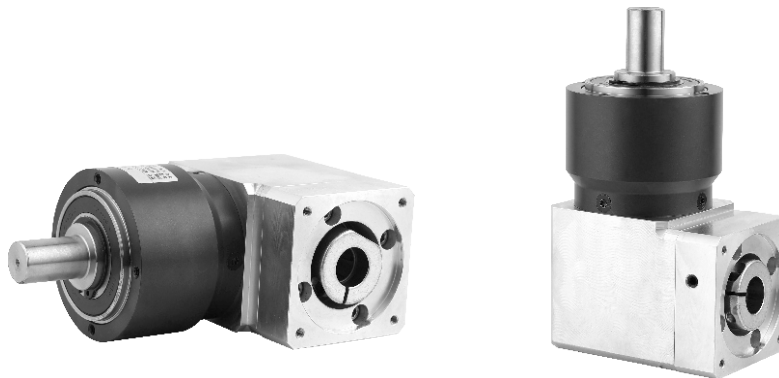


# SEPRB SERIES PRECISION PLANETARY GEAR MOTOR

## Product Graph



## Technical Data

Product type		70	90	Reduction ratio	Number of stage
Rated output torque	N.M	14	40	3	1
		19	53	4	
		24	67	5	
		18	50	8	
		15	38	10	
		33	97	9	2
		33	90	12	
		33	82	15	
		33	90	16	
		33	90	20	
		30	82	25	
		33	90	32	
		30	82	40	
		18	50	64	
		15	38	100	
Life	Hour	20,000			
Instant stop torque	N.M	66	180	3	-
		86	240	4	
		80	220	5	
		80	190	8	
		70	170	10	
		88	260	9	-
		88	240	12	
		88	220	15	
		88	240	16	
		88	240	20	
		80	220	25	
		88	240	32	
		80	220	40	
		80	190	64	
		80	170	100	

Product type	70	90	Unit	Number of stage
Max radial load	1650	3100	N	
Max axial load	2100	3800	N	
Full load efficiency	95		%	1
	94			2
Weight	2.1~2.2	4.8~4.9	Kg	1
	2.4~2.6	5.5~5.6		2
Operating temperature	-25~+90		°C	
IP	IP54			
Lubrication type	Lifetime lubrication			
Mounting type	Any			

The max radial and axial torque work in the location of the center of output shaft when the out speed is 100RPM.

# SEPRB SERIES PRECISION PLANETARY GEAR MOTOR

## Technical Data

Product type		70	90	Reduction ratio
Moment of inertia	Kgcm <sup>2</sup>	0.218~0.329	0.925~1.408	3
				4
				5
				8
				10
		0.218~0.326	0.907~1.245	9
				12
				15
				16
				20
				25
				32
				40
				64

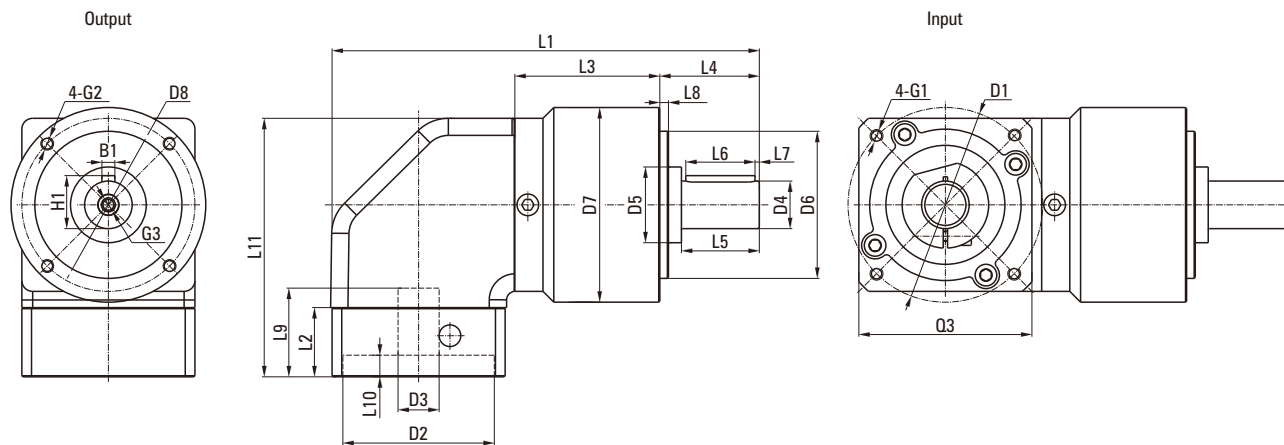
Product type		70	90	Number of stage
Backlash	arcmin	< 16	< 13	1
		< 18	< 15	2

Product type		70		90	
Number of stage		1	2	1	2
Torsional stiffness	N.M/arcmin	2.2 - 4.1	3.3-5.3	4.7 - 10.8	9.0 - 14.1
Noise	dB(A)	70		73	
Max input speed	min <sup>-1</sup>	13000		7000	
Recommend input speed	min <sup>-1</sup>	4500		4000	

1. The moment of inertia is related with input shaft.
2. Noise test standard, distance 1m, measured noload running with an input speed of 3000rpm.
3. The max radial and axial torque work in the location of the center of output shaft when the out speed is 100RPM.
4. The maximum input speed is designed to software.

# SEPRB SERIES PRECISION PLANETARY GEAR MOTOR

## Dimensions



Unit: mm

PN	70SEPRB		90SEPRB	
Number of stage	1	2	1	2
L1 overall length	/	/	/	/
L3 body length	51	64	67	84.5
<b>Output</b>				
L12 overall height	85.5		119.5	
L4 output shaft length	36		46	
L5 output length to the shaft shoulder	28		36	
L6 key length	25		32	
L7 key length to the shaft end	2		2	
L8 protruding length	3		4	
D4 output shaft diameter	Φ16h7		Φ22h7	
D5 shaft shoulder diameter	Φ30		Φ35	
D6 protruding diameter	Φ52h7		Φ68h7	
D7 body diameter	Φ70		Φ90	
D8 hole circle	Φ62		Φ70	
B1 key width	5		6	
H1 key height	18		24.5	
G3 center screw hole	M5X12		M6X16	
<b>Input</b>				
L2 input flange length	For more detailed information, please consult the manufacturer			
L9 motor shaft length				
L10 protruding depth				
D1 mounting hole distribution circle				
D2 protruding diameter				
D3 input shaft diameter				
G1 mounting threads hole x depth				
Q3 input flange				

※ Input size made according to motor size.

※ The dimensions of L9, L10, D1, D2, D3, Q3, and G1 are installation dimensions for customer's motor, and the total length of L1 depends on the size of customer's motor.