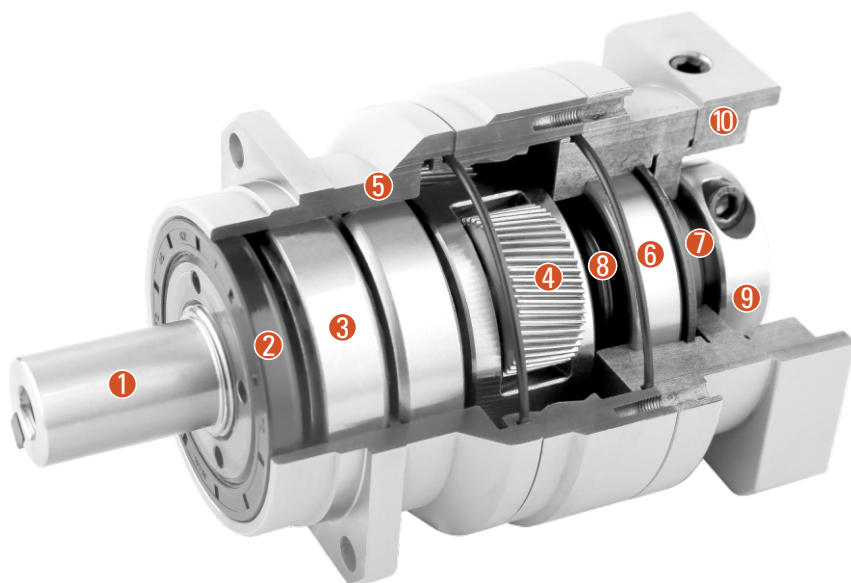


# SRS SERIES GEAR BOX

## Sectional Drawing



- ① Output shaft
- ② Oil seal
- ③ Output shaft bearing
- ④ Planetary gear
- ⑤ Front cover
- ⑥ Coupling bearing
- ⑦ Oil seal
- ⑧ Coupling
- ⑨ Lock ring
- ⑩ Rear cover

## Type And Model Number

SRS Reducers				Servo Motor		
--------------	--	--	--	-------------	--	--

**060**      **SRS**      **10**      **( )**      **(S)**      -      **400**      **T1**  
 ①            ②            ③            ④            ⑤            ⑥            ⑦

① Gear head frame size: 060

② Gear head series code: SRS: Square mounting flange series

Gear ratio

③ Single stage: 3, 4, 5, 6, 7, 8, 9, 10

Two stage: 15, 20, 25, 30, 35, 40, 45, 50, 60, 70, 80, 90, 100

Amount of backlash, (P07)

④ Standard type P1 (Omission), high precision P0

The load of output shaft is  $\pm 3\%$  of allowable output torque

Input shaft type

S: Overall Locking (Omission) (Regardless whether the motor with keyway can use it)

⑤ S1: Locking with locking ring (Omission) (Regardless whether the motor with keyway can use it)

S2: Locking with keyway (Input shaft with key)

A: Other type (Please contact with us)

⑥ Applicable servo motor power (W)

⑦ Model of servo motor & input flange

# PRODUCT SPECIFICATIONS

## Reducer Performance Data

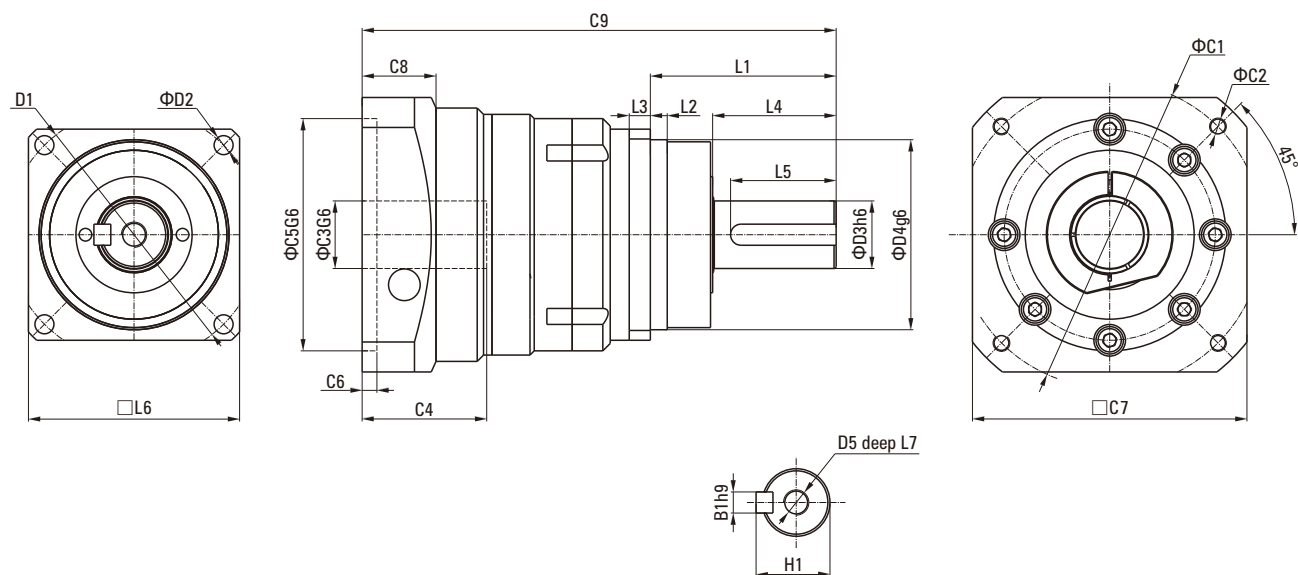
Specifications		Stage Number	Reduction Ratio	060SRS	075SRS	100SRS	140SRS	
Rated output torque $T_{2N}$	Nm	1	3	55	130	208	342	
			4	50	140	190	542	
			5	60	160	330	650	
			6	55	150	310	600	
			7	50	140	300	550	
			8	45	120	260	500	
			9	40	100	230	450	
			10	40	100	230	450	
			2	15	-	130	208	342
				20	-	140	290	542
		25		-	160	330	650	
		30		-	150	310	600	
		35		-	140	300	550	
		40		-	120	260	500	
		45		-	100	230	450	
		50		-	160	330	650	
		60		-	150	310	600	
		70		-	140	300	550	
		80	-	120	260	500		
90	-	100	230	450				
100	-	100	230	450				
Sudden stop torque	Nm	1,2	3~100	3 times rated output torque				
Rated input speed	rpm	1,2	3~100	3000	3000	3000	2000	
Maximum input speed	rpm	1,2	3~100	6000	6000	6000	4000	
Precision back lash	arcmin	1	3~10	≤1	≤1	≤1	≤1	
		2	15~100	-	≤3	≤3	≤3	
Standard back lash	arcmin	1	3~10	≤3	≤3	≤3	≤3	
		2	15~100	-	≤5	≤5	≤5	
Torsional rigidity	Nm/arcmin	1,2	3~100	7	14	25	50	
Allowable radial force	N	1,2	3~100	3000	4300	7000	10000	
Allowable axial force	N	1,2	3~100	2700	3900	6300	9000	
Life	hr	1,2	3~100	20000				
Efficiency	%	1	3~10	≥97				
		2	15~100	≥94				
Weight	Kg	1	3~10	1.3	3.7	7.8	14.5	
		2	15~100	-	4.1	9	17.5	
Working temperature	°C	-	-	-10°C~+90°C				
Lubrication way	-	-	-	Synthetic grease				
Protection grade	-	-	-	IP65				
Installation direction	-	1,2	3~100	Any direction				
Noise value	dB (A)	1,2	3~100	≤58	≤60	≤63	≤67	

## Moment Of Inertia Of The Reducer

Specifications		Stage Number	Reduction Ratio	060SRS	075SRS	100SRS	140SRS	
The moment of inertia $J_1$	$Kg \cdot cm^2$	1	3	0.22	1.20	5.2	20	
			4	0.17	0.95	4.0	15	
			5	0.16	0.86	3.6	13	
			6	0.15	0.82	3.3	13	
			7	0.14	0.79	3.1	12	
			8	0.14	0.77	3.0	12	
			9	0.14	0.76	3.0	11	
			10	0.14	0.75	3.0	11	
			2	15	-	0.72	2.8	11
				20	-	0.72	2.8	11
		25		-	0.71	2.8	11	
		30		-	0.70	2.7	10	
		35		-	0.71	2.7	11	
		40		-	0.69	2.7	10	
		45		-	0.71	2.7	11	
		50		-	0.69	2.7	10	
		60		-	0.69	2.7	10	
		70		-	0.69	2.7	10	
		80	-	0.69	2.7	10		
		90	-	0.69	2.7	10		
100	-	0.69	2.7	10				

# SRS DIMENSIONS (SINGLE STAGE I=3-10)

## Dimensional Drawing



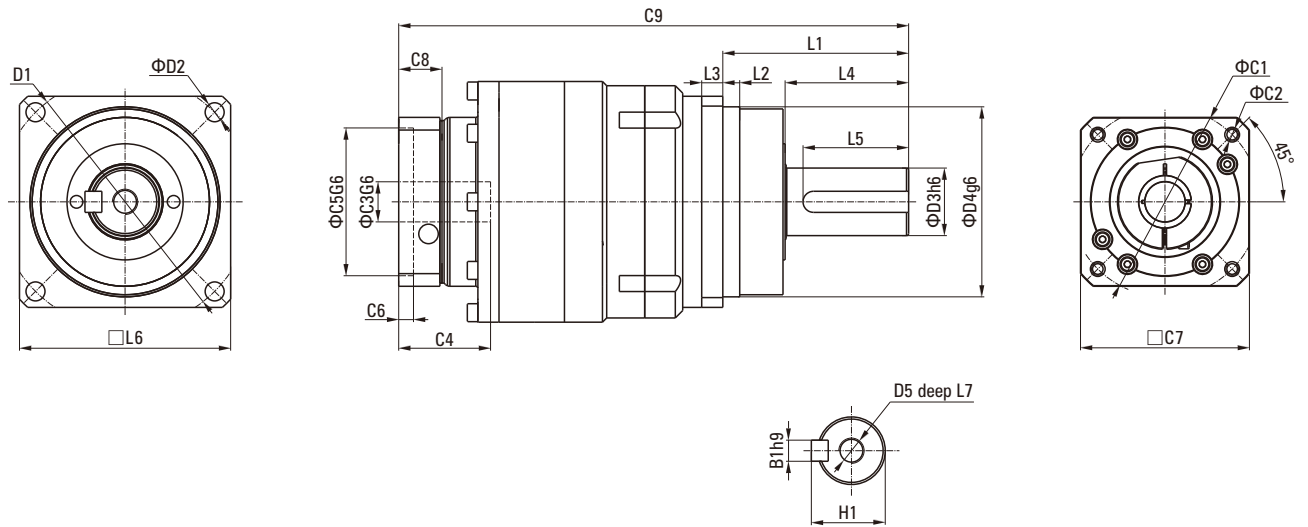
## Dimensional Table

Unit: mm

Size	060SRS	075SRS	100SRS	140SRS
D1	68	85	120	165
D2	5.5	7.5	9	11
D3 <sup>h6</sup>	16	22	32	40
D4 <sup>g6</sup>	60	70	90	130
D5	M5×0.8P	M8×1.25P	M12×1.75P	M16×2P
L1	48	56	88	112
L2	11	6	8	10
L3	6	7	10	12
L4	28	34.7	58	82
L5	25	31	50	70
L6	60	75	100	140
L7	15	19	28	36
C1	70	100	145	165
C2	M5×0.8P	M6×1P	M8×1.25P	M10×1.5P
C3 <sup>g6</sup>	≤14/≤16	≤19/≤24	≤32	≤38
C4	35	40.5	51	60
C5 <sup>g6</sup>	50	80	110	130
C6	8	4	5	6
C7	60	90	130	142
C8	19.5	17.5	20	22.5
C9	96.5	167.5	224.5	295.5
B1 <sup>h9</sup>	5	6	10	12
H1	18	24.5	35	43

# SRS DIMENSIONS (TWO STAGE I=15-100)

## Dimensional Drawing



## Dimensional Table

Unit: mm

Size	075SRS	100SRS	140SRS
D1	85	120	165
D2	7.5	9	11
D3 <sub>h6</sub>	22	32	40
D4 <sub>g6</sub>	70	90	130
D5	M8×1.25P	M12×1.75P	M16×2P
L1	56	88	112
L2	6	8	10
L3	7	10	12
L4	34.7	58	82
L5	31	50	70
L6	75	100	140
L7	19	28	36
C1	70	100	145
C2	M5×0.8P	M6×1P	M8×1.25P
C3 <sub>g6</sub>	≤14/≤16	≤19/≤24	≤32
C4	35	40.5	51
C5 <sub>g6</sub>	50	80	110
C6	8	4	5
C7	60	90	130
C8	19.5	17.5	20
C9	186.5	241	308.5
B1 <sub>h9</sub>	6	10	12
H1	24.5	35	43